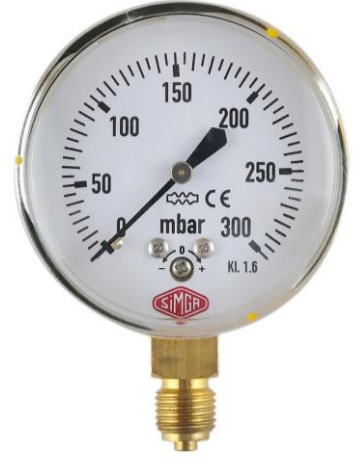


Ø63 Dry bottom connection Capsule Manometers

- Used for pressure measurement of liquids and gases.
- Capsule spring manometers are generally used for the measurement of low pressures of materials such as gas and air from 0-6 mbar to 0-600 mbar.
- SİMGA capsule spring manometers are successfully used in oxygen instruments, ventilation systems, leakage control, vacuum systems and laboratories.



Model No: **D 06310**

Product Specifications

STANDARD FEATURES					
Accuracy Class:	1,6				
Mechanism:	Brass				
Case:	Steel, chrome or black oven painted				
Frame:	Steel, black oven painted, chrome or acrylic				
Connection:	Brass 1/4 BSP (Other size threads on the request)				
Pressure Unit:	Cu Sn 8 Bourdon Tube				
Dial:	Aluminum, black division on white base or white division on black base				
Scale Unit:	bar				
Scale Range:	0..25 mbar	0..60 mbar	0..160 mbar	0..300 mbar	0..600 mbar
	0..40 mbar	0..100 mbar	0..250 mbar	0..400 mbar	0..1000 mbar

TECHNICAL DETAILS	
Standard:	EN 837-3
Environment Temperature:	-20...+60°C
Warehouse Temperature:	-40...+70°C
Madde İsi:	Special production is required if used up to 60 ° C for soft solder, up to 100 ° C for hard solder, up to 200 ° C at higher temperatures.

FEATURES ON THE REQUEST	
▪ Thread ¼ NPT	▪ Special dial printing
▪ Satinless Steel Connection	▪ Stainless Steel mechanism
▪ Stainles Steel capsule spring	▪ Speed decreasing stopper
▪ Stainless Steel Case and Frame	▪ Specialthin pointer or adjustable pointer